



Karndean  
Designflooring

Commercial



Da Vinci

Da Vinci

GLUEDOWN

# Da Vinci Wood

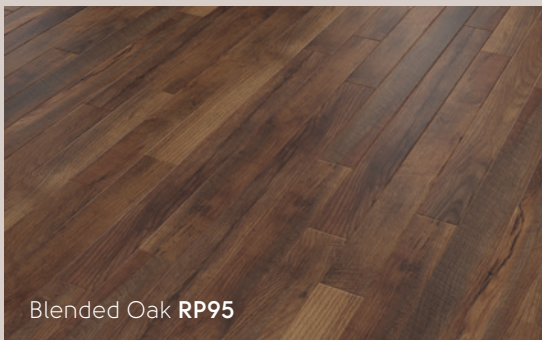
Each of our Da Vinci wood planks has a distinctive beveled edge and light surface finish, creating a traditional and elegant look. These visuals are available in a variety of colourways, from traditional mid-browns to contemporary washed grays.



Limed Silk Oak RP96

## Limed Oak

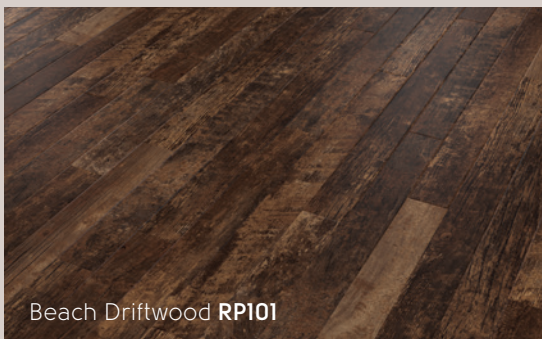
Inspired by natural textiles, the soft, muted tones of the limed oaks are made all the more interesting by their striking lime-washed finish, which highlights each plank's intricate details.



Blended Oak RP95

## Classic Wood

Our classic woods beautifully replicate the timeless hues and clean, linear grain and knot detailing of traditional strip flooring in a uniform finish.



Beach Driftwood RP101

## Reclaimed Driftwood

Developed from driftwood found on Australia's Fraser Island, our reclaimed driftwood design captures the gentle, sea-worn features and rustic look of woods found washed along the shore.

# Da Vinci Stone

Our Da Vinci stone range offers the rich textures of natural slate, ceramic and limestone with a distinctive beveled edge, adding definition to each tile. The Da Vinci range offers a wide variety of colourways to suit your space.



Burnet CER19

## Fabric

Inspired by textiles, these designs feature light strands that create subtle texture across each tile, allowing these designs to be interpreted as either natural woven fabric or lightly brushed concrete.



Sable CER16

## Natural Stone

Developed from natural limestone, an enduring favourite in tile flooring, our natural stone designs are the result of combining distinctive grain and fossilization detailing from different pieces of stones together.



Iron Ore CER12

## Weathered Steel

As natural steel is exposed to the elements, it transforms from a smooth, shiny surface to a marked and weathered structure, due to the wind, rain and ongoing oxidation process. Our visuals reflect the dynamic patterning that results from this transformation.

It's not just the floor you lay, but how you lay it that makes a lasting impression. We offer numerous pattern possibilities to make the most of your space. Add design strips and borders for a truly unique look.

## Wood layouts

Herringbone



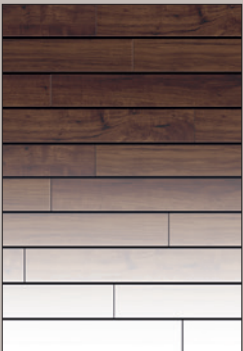
Chevron



Broken Chevron



Ship Lap



Striped



Basket Weave

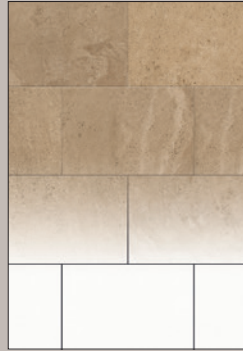


Staggered



## Stone layouts

Brick Lay



Diagonal



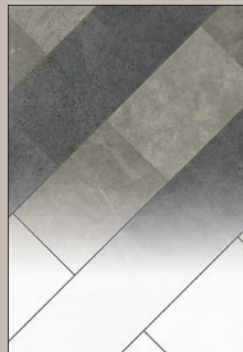
Diamond



Herringbone



Striped



## Mixed layouts

Mix wood and stone designs from the same product range to ensure the product thicknesses and visuals are compatible with one another.

Plaid



Alternating



Striped



Limed Oak



Limed Silk Oak **RP96\***

36" x 3" (915mm x 76mm)



Limed Linen Oak **RP98\***

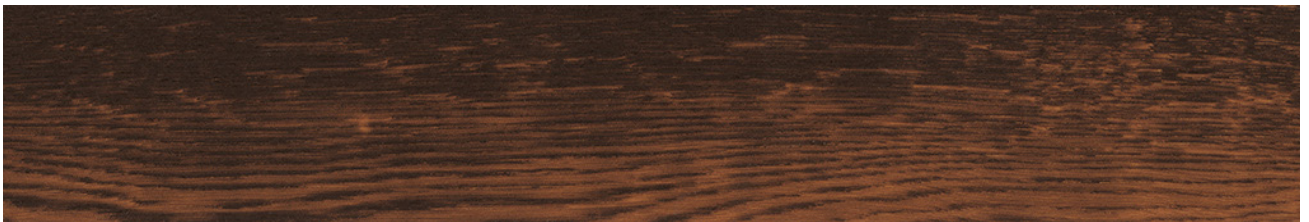
36" x 3" (915mm x 76mm)



Limed Cotton Oak **RP99\***

36" x 3" (915mm x 76mm)

Smoked Wood



Scorched Oak **RP94\***

36" x 3" (915mm x 76mm)



Double Smoked Acacia **RP105\***

36" x 3" (915mm x 76mm)

Reclaimed Driftwood



Coastal Driftwood **RP100\***

36" x 3" (915mm x 76mm)

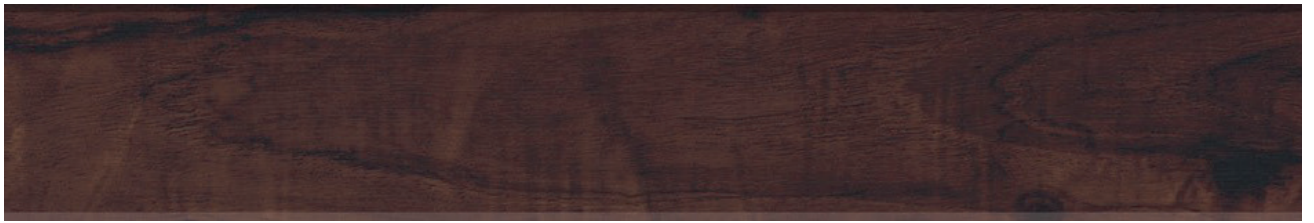


Beach Driftwood **RP101\***

36" x 3" (915mm x 76mm)

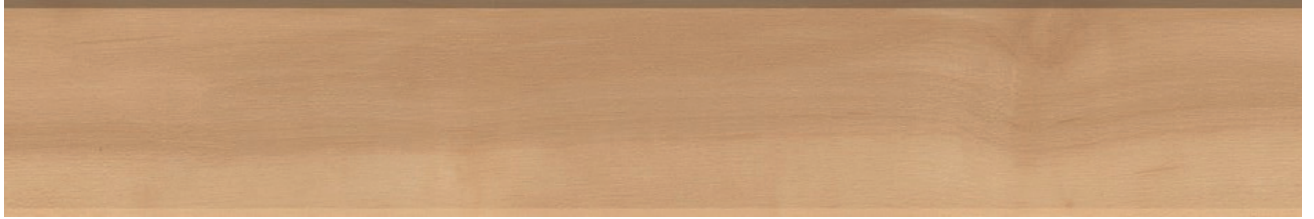
\*Please note: as a feature of the design, these products incorporate high colour variation between individual planks.

Classic Wood



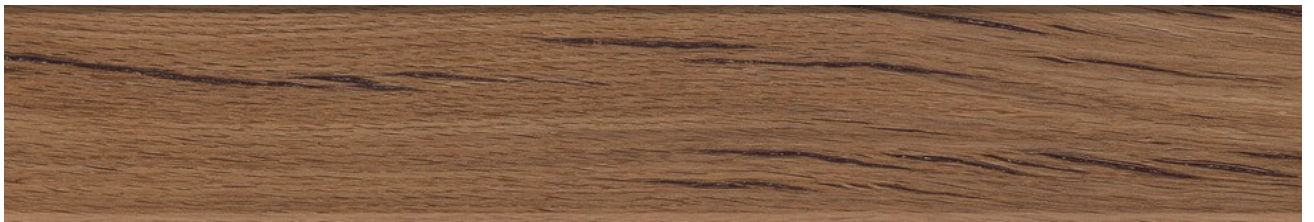
Australian Walnut **RP41**

36" x 3" (915mm x 76mm)



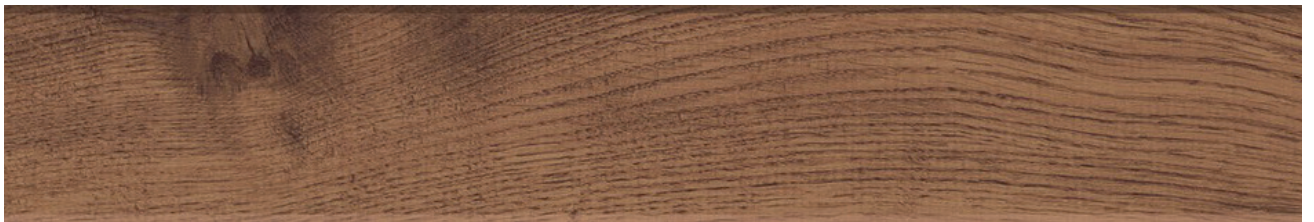
Canadian Maple **RP61**

36" x 3" (915mm x 76mm)



Kenyan Tigerwood **RP73\***

36" x 3" (915mm x 76mm)



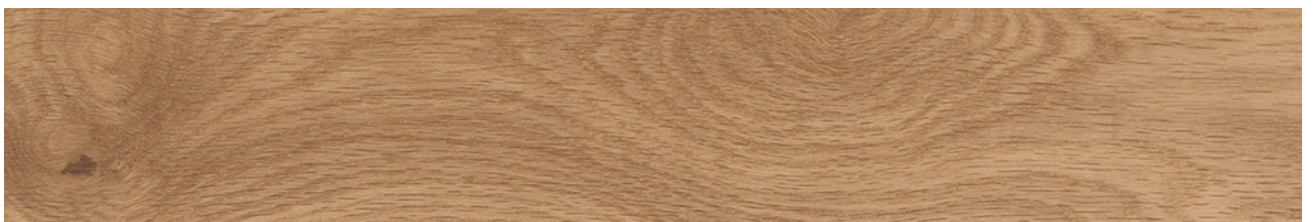
Lorenzo Warm Oak **RP91**

36" x 3" (915mm x 76mm)



Blended Oak **RP95\***

36" x 3" (915mm x 76mm)



Natural Oak **RP102**

36" x 3" (915mm x 76mm)



Harvest Oak **RP103**

36" x 3" (915mm x 76mm)

Fabric



Burnet **CER19** 12" x 18" (305mm x 457mm)

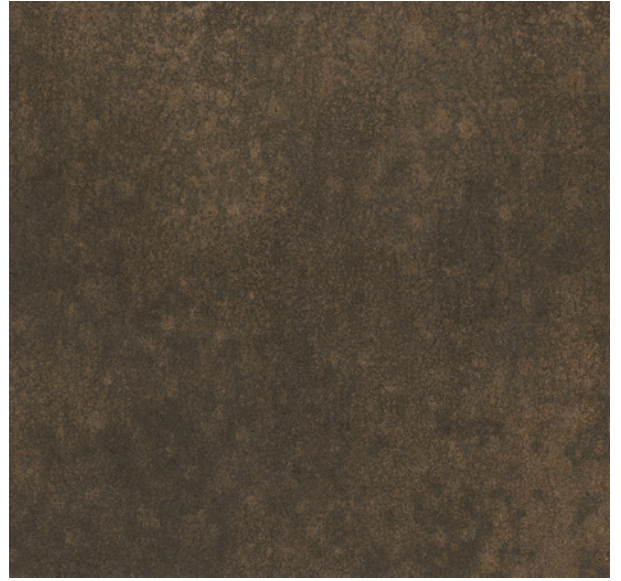


Sindon **CER21** 12" x 18" (305mm x 457mm)

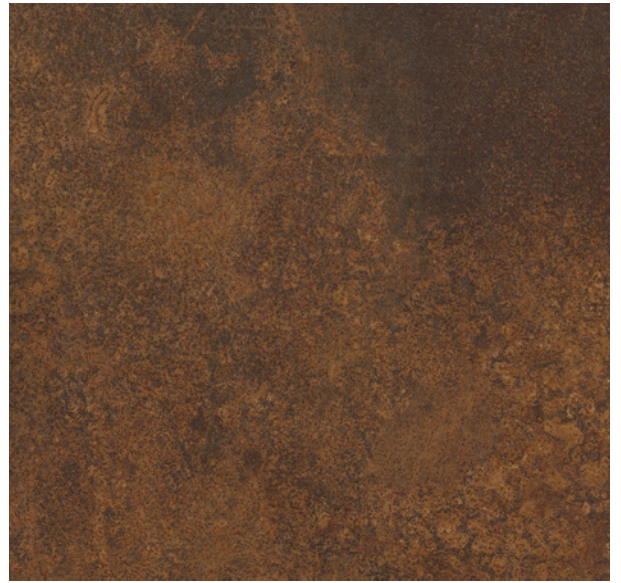


Cambric **CER20** 12" x 18" (305mm x 457mm)

Weathered Steel



Eisen **CER13\*** 12" x 18" (305mm x 457mm)



Iron Ore **CER12\*** 12" x 18" (305mm x 457mm)



Carbon **CER14\*** 12" x 18" (305mm x 457mm)

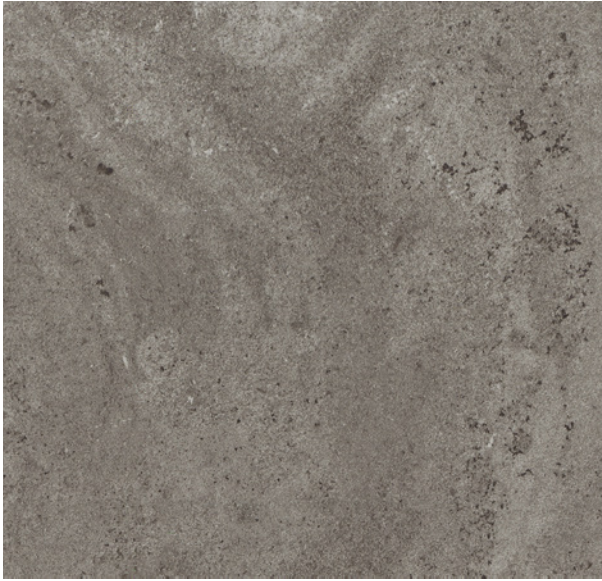
\*Please note: as a feature of the design, these products incorporate high colour variation between individual planks.

Weathered Steel



Oxide **CC08\*** 16" x 16" (406mm x 406mm)

Natural Stone



Drift **CER17** 12" x 18" (305mm x 457mm)



Sable **CER16** 12" x 18" (305mm x 457mm)

Natural Stone



Piazza Limestone **LST03** 16" x 16" (406mm x 406mm)



Santi Limestone **LST05** 16" x 16" (406mm x 406mm)



Spirito Limestone **LST04** 16" x 16" (406mm x 406mm)

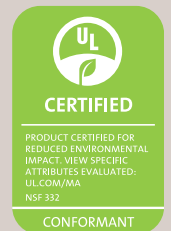


# Technical Specification

	Standard	Result
Thickness		3.0 mm
Size		See separate table
Box quantity		See separate table
Wear layer*		30 mil (0.7 mm)
Surface treatment		K-Guard+® PU coating
Warranty**	Commercial Residential	20 years Lifetime
Beveled edge		Standard
Classification	ASTM F1700	Class III Type B
Reaction to fire	ASTM E648-06	Class 1
Smoke density	ASTM E662-06	Pass (<450)
Flammability test	FF 1-70; Federal Approval	Pass
Slip resistance***	ASTM D2047	Pass (Dry 0.92)
Staining resistance	ASTM F925	Pass
Light fastness	ASTM F1515	Pass ΔE = 3.3
Abrasion resistance	ASTM D3884	115000 cycles
Dimensional stability	ASTM F2199	Pass -0.002"/lin.ft
Acoustic impact noise reduction	ASTM E2179-09 ASTM E492-09	ΔIIC = 6 dB IIC = 46 dB (6" slab w/drop ceiling) IIC = 71 dB (6" slab w/drop ceiling + QuietChoice) For settings that require additional noise reduction, contact your Commercial Business Manager for our portfolio of acoustic solutions.
Static load	ASTM F970	1000 psi
Flexibility	ASTM F137	Pass
Adhesive	Please refer to our installation instructions.	
Recycling		Suitable
Phthalate free		Yes



CERTIFIED BY SCS Global Services



\* Nominal

\*\* Subject to terms, please see our website. Full technical data is available on our website.

\*\*\* Slip resistance is measured on freestanding ex-factory product. Slip resistance can be affected by many factors including but not limited to: product installation and underlayment, surface contamination, use, wear and how the product is maintained. Textural variation along the surface of the product can affect nominal values.

## Da Vinci Wood

Product	Size (inch)	Box quantity
RP41, RP61, RP73, RP91, RP94, RP95, RP96, RP98, RP99, RP100, RP101, RP102, RP103, RP105	36" x 3"	36 sq.ft 48 Planks

## Da Vinci Stone

Product	Size (inch)	Box quantity
CC08, LST03, LST04, LST05	16" x 16"	35.6 sq.ft 20 Tiles
CER12, CER13, CER14, CER16, CER17, CER19, CER20, CER21	12" x 18"	36 sq.ft 24 Tiles



Manufactured to:  
ISO 9001 Environmental Standard  
ISO 14001 Quality Standard

## Karndean Designflooring Canada

#3-3250 Harvester Road, Burlington, Ontario L7N 3W9

Phone: 866-819-6825

Email: info@karndeancanada.ca



www.karndean.com

Cover image: Scorched Oak RP94

## Colour and Pattern Reproduction

We are careful to make sure our brochures are accurate and printed to very high standards, but photography and printing cannot always create a perfect representation of our products. For this reason we strongly recommend that you look at a sample of any product you are considering before placing your order.

All of our products are inspired by things we have seen in the natural world. Just as variation in colour and detail is part of the unique beauty of natural materials, it is also a feature of many of our designs. This means that with some of our products you will see natural variation when your floor is laid. If in doubt, ask to see a larger sample of the product.