



# Karndean Designflooring

## Commercial

# HOTEL

Whether you are designing the reception area, guest rooms, bar or restaurant, Karndean Designflooring offers something unique for each area.



Low maintenance



Hygienic



Acoustic qualities



Comfortable  
underfoot



Pet friendly

# Karndean Designflooring in Hotel Settings

Stylish, hygienic, low maintenance and pet friendly Karndean flooring helps you to create a safe and engaging environment that will keep guests coming back.



## **Durable and hygienic for high traffic areas**

With wear layers up to 30mil, you can rely on Karndean Designflooring to withstand the high foot traffic levels in spaces like lobbies, main corridors and restaurants. In addition to our durable and hygienic K-Guard+® surface protection, Karndean's nonporous planks and tiles do not harbor dirt, dust or bacteria and give guests added peace of mind.

## **Acoustic qualities**

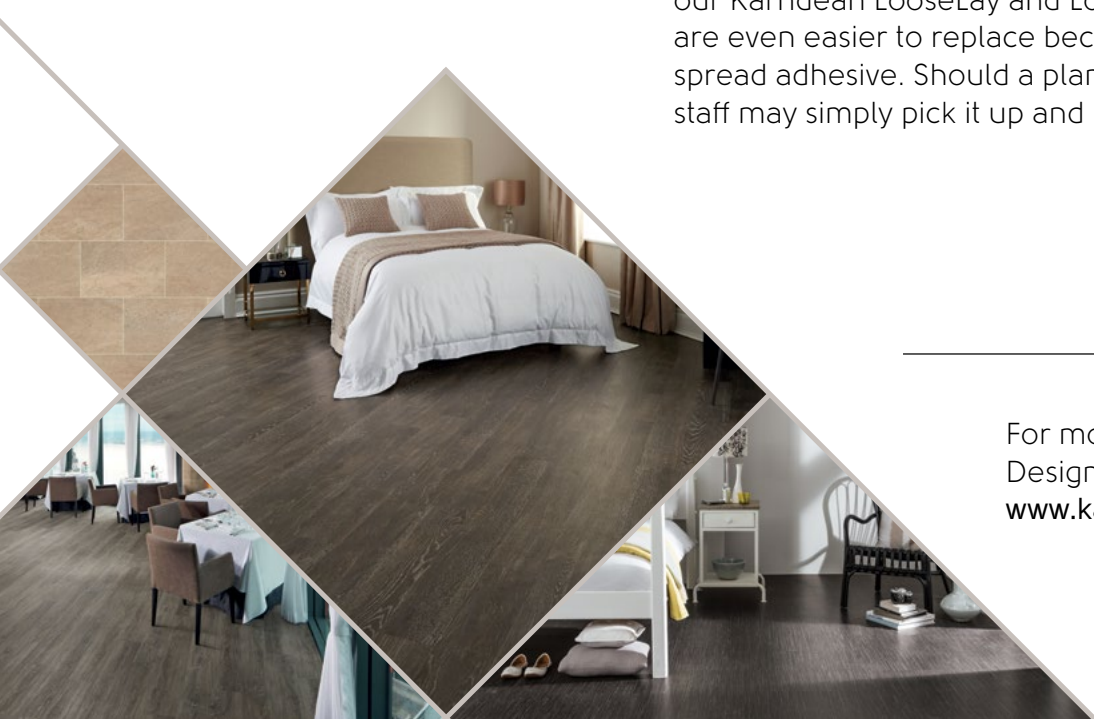
Ensure that guests have a peaceful stay with Karndean Designflooring. Our loose lay and rigid core ranges offer impressive acoustical ratings, reducing noise transfer between 16-22 dB. Combine our QuietChoice acoustic underlayment with any of our floors to achieve a 71 IIC rating.

## **Pet friendly flooring**

From muddy paw prints to accidents, our waterproof and easy to clean floors are designed with furry, four-legged guests in mind.

## **Individually replaceable**

While all our gluedown products may be individually replaced, our Karndean LooseLay and LooseLay Longboard products are even easier to replace because they don't require full-spread adhesive. Should a plank become damaged, on-site staff may simply pick it up and replace it with a new one.



---

For more information about Karndean Designflooring in hotel settings, visit [www.karndean.com/hotel](http://www.karndean.com/hotel).


# Specifically Engineered for Hotels

Karndean Designflooring planks and tiles are versatile enough to be used across a variety of hotel settings, including guest rooms, lounge areas, bars and restaurants.




## Our Hotel Portfolio

### Gluedown

	Wood	Stone	Wear Layer mil (mm)	Thickness mm	Plank Size Inches (mm)	Tile Size Inches (mm)	Commercial Warranty
	✓	✓	30 (0.7)	3	18 x 3 (457 x 76) 36 x 6 (915 x 152) 48 x 7 (1219 x 178) 56 x 9 (420 x 228) Random planks in 4, 5 & 7" widths	6 x 36 (152 x 915) 16 x 16 (406 x 406) 18 x 24 (457 x 610) Random panel 36 x 36 (915 x 915)	20 years

### Loose lay

	✓	✓	20 (0.5)	4.5	<ul style="list-style-type: none"> <li>■ Karndean LooseLay 41.33 x 9.84 (1050 x 250)</li> <li>■ LooseLay Longboard 59.05 x 9.84 (1500 x 250)</li> </ul>	19.68 x 24.01 (500 x 610)	15 years
---	---	---	----------	-----	---	---------------------------	----------

### Rigid core

	✓	✓	20 (0.5)	6.5	<ul style="list-style-type: none"> <li>55.91 x 8.86 (1420 x 225)</li> <li>23.46 x 5.87 (596 x 149)</li> </ul>	<ul style="list-style-type: none"> <li>17.99 x 23.62 (457 x 600)</li> <li>23.46 x 5.87 (596 x 149)</li> </ul>	15 years
---	---	---	----------	-----	---	---	----------



Low maintenance



Hygienic



Acoustic qualities



Comfortable underfoot



Pet friendly

# DoubleTree Hilton Hotel

Location: Manchester, United Kingdom

Product: Art Select Hickory Nutmeg **EW03**

"The original wooden floor scratched easily, was hard to maintain and looked tired after coping with heavy traffic 24 hours a day. As expected, the new Karndean flooring has proven to be an excellent choice in every respect. It has provided us with a beautiful wood look floor that's harder wearing than the original wooden planks and fits in with our new look perfectly."

Peter Rose, Hospitality Property Manager at DoubleTree Hilton



Art Select

GLUEDOWN

# UpValley Inn

Location: Calistoga, CA

Product: Karndean LooseLay Hartford **LLP112**

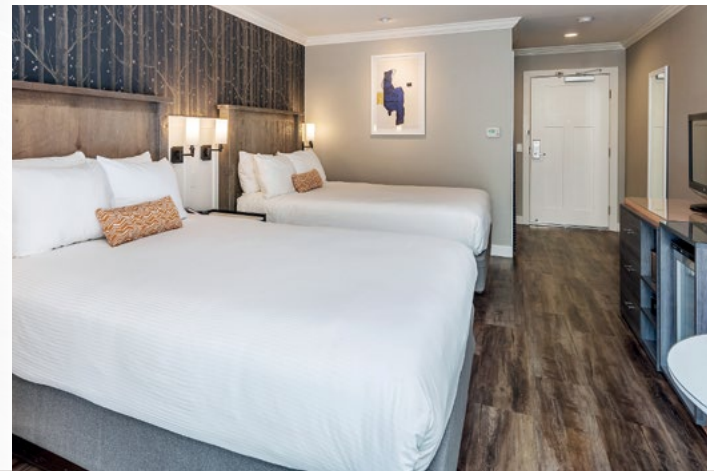
"The floor is the least of my worries now. You can replace a plank in 30 seconds - that's the biggest peace of mind."

Amar Patel, Managing Member at The Anvaya Group



Karndean LooseLay

LOOSE LAY



View the full case studies at [www.karndean.com/commercialcasestudies](http://www.karndean.com/commercialcasestudies).

## Color and Pattern Reproduction

We are careful to make sure our brochures are accurate and printed to very high standards, but photography and printing cannot always create a perfect representation of our products. For this reason we strongly recommend that you look at a sample of any product you are considering before placing your order.

All of our products are inspired by things we have seen in the natural world. Just as variation in color and detail is part of the unique beauty of natural materials, it is also a feature of many of our designs. This means that with some of our products you will see natural variation when your floor is laid. If in doubt, ask your retailer to show you a larger sample of the product.

Contact us...

**Karndean Designflooring**  
Call: 888-266-4343  
Email: [info@karndean.com](mailto:info@karndean.com)

**Karndean Designflooring Canada**  
Call: 866-819-6825  
Email: [info@karndeancanada.ca](mailto:info@karndeancanada.ca)

\*Calls may be recorded for training and quality purposes.



**Karndean**  
**Designflooring**

Commercial

[www.karndean.com](http://www.karndean.com)

